



FORMATION EVALUATION LOG



WELL : BASKER-5

FROM (m): 2150 TO (m): 3650 SCALE: 1/ 500

Country : AUSTRALIA	Latitude : 38°17'59.31"S	17 1/2" Hole to (mMDRT) : 1012m	Spud Date : 26-02-2006
Basin : GIPPSLAND	Longitude : 148°42'23.80"E	12 1/4" Hole to (mMDRT) : xxxm	Total Depth Date : xx-xx-2006
Field : BASKER	UTM Co-ord X (m E) : 650106.2	8 1/2" Hole to (mMDRT) : 3357m	Total Depth (mRT) : 3357m
Permit : VIC/L26	UTM Co-ord Y (m N) : 5761989.6	13 3/8" Shoe at (mMDRT) : 1001.3m	T.V.D. (mSS MSL) : 3072m
Well Type : DEVELOPMENT	RT-LAT (m) : 21.5	9 5/8" Shoe at (mMDRT) : xxx.xm	Status :
Rig Name : OCEAN PATRIOT	RT-Seabed (m) : 175.1	7" Shoe at (mMDRT) : xxxm	

ABBREVIATIONS

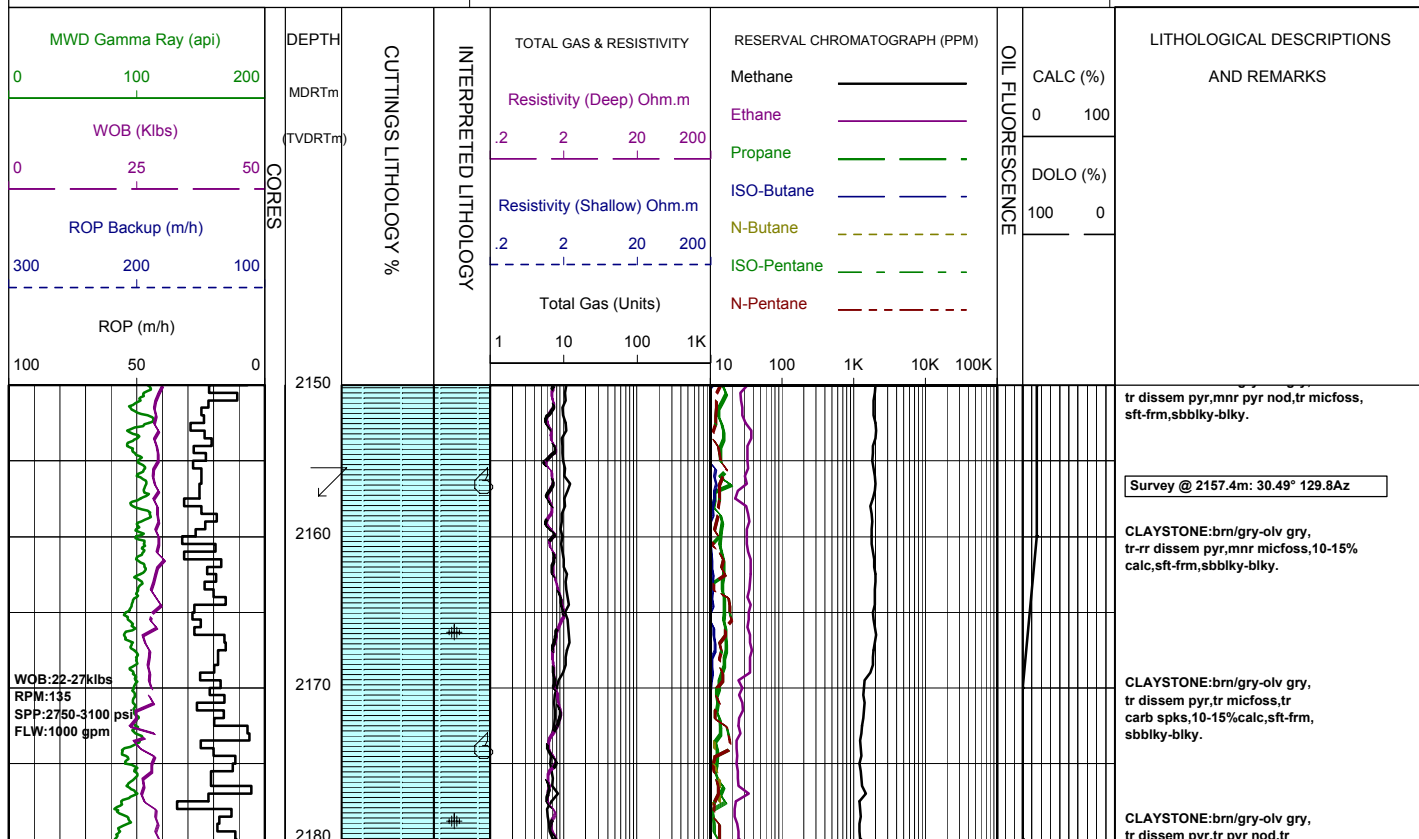
MW MUD WEIGHT	NB NEW BIT
FV FUNNEL VISCOSITY	RR RERUN BIT
PV PLASTIC VISCOSITY	CB CORE BIT
YP YIELD POINT	WOB WEIGHT ON BIT
FC FILTER CAKE	RPM REVS PER MINUTE
SOL SOLIDS	FLC FLOW CHECK
WL FILTRATE	CR CIRCULATE RETURNS
SD SAND - %	PR POOR RETURNS
S SALINITY - PPM	NR NO RETURNS
RM MUD RESISTIVITY	BG BACKGROUND GAS
RMF MUD FILTRATE	TG TRIP GAS
C CARBIDE TEST	STG SHORT TRIP GAS
LAT LOGGED AFTER TRIP	CG CONNECTION GAS
DS DEVIATION SURVEY	SG SWAB GAS
	SVG SURVEY GAS

LITHOLOGY LEGEND

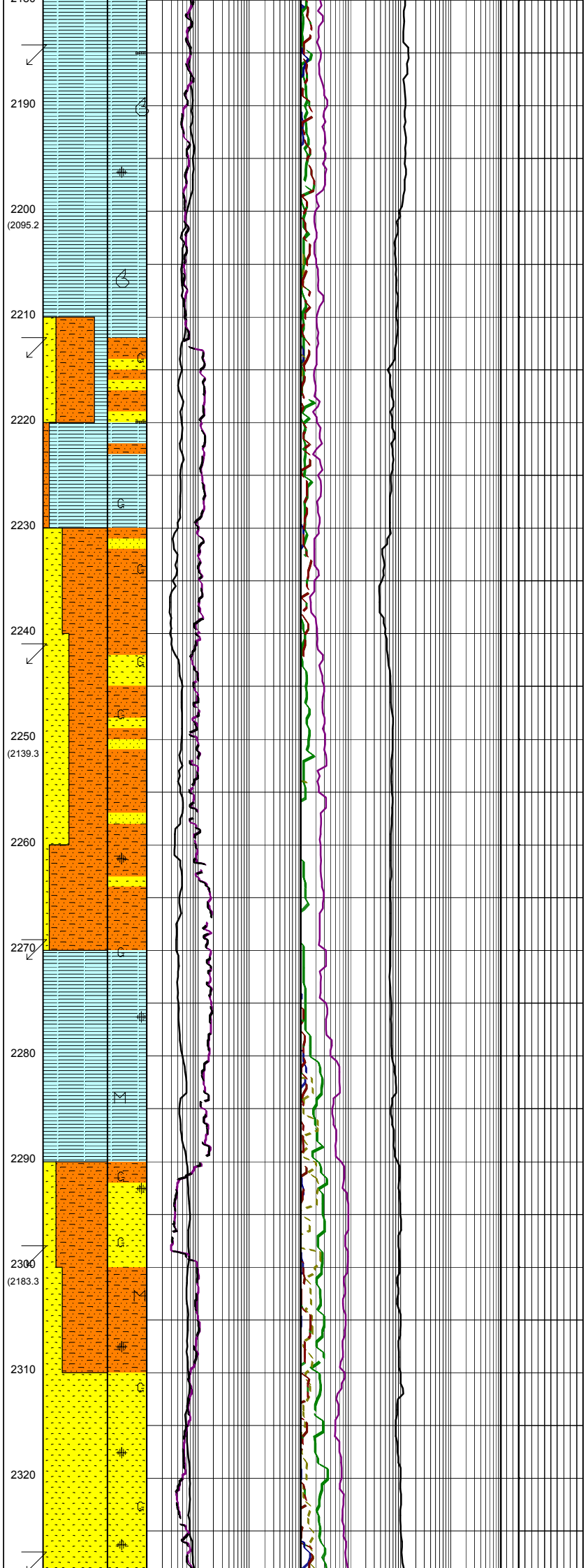
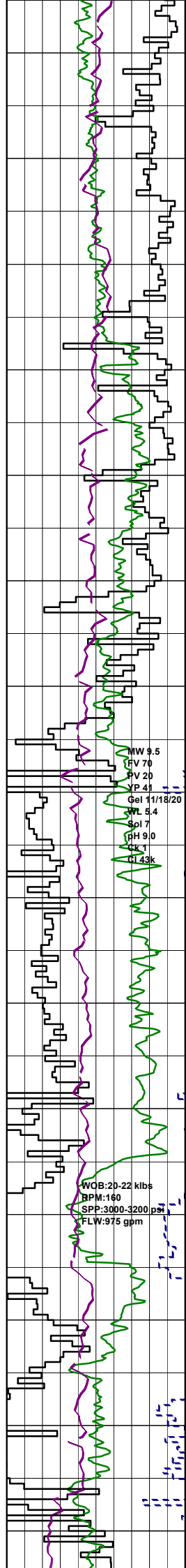
	Claystone		Limestone		Brachiopoda
	Siltstone		Dolomite		Cement
	ar. Silt ar		Coal		Sponges
	Fine SST		Gypsum		Glauconite
	Medium SST		Lithic Fragment		Pyrite
	Coarse SST		Foraminifera		Iron Minerals
	Marl		Fossils		Mica
	Clay, Limestone		Bryozoa		Carb Fragments

ENGINEERING LEGEND

	Shoe		FIT
	Mud loss		Mud gain
	Deviation survey		
	DST		
	Test		
	Sidewall Core		
	Core		
	RFT		



WOB: 22-27 klbs
RPM: 135
SPP: 2750-3100 psi
FLW: 1000 gpm



micfoss, mnr carb spks, tr calc, sft-frm, sbbiky-sbfiss.

Survey @ 2186.1m: 29.68° 128.9Az

CLAYSTONE: brn/gry-olv gry, tr dissem pyr, tr carb lams, mnr carb spks, tr calc, sft-frm, sbbiky-sbfiss.

CLAYSTONE: brn/gry-olv gry, tr dissem pyr, tr carb spks, tr calc, tr micfoss, sft-frm, sbbiky-blky.

CLAYSTONE: brn/gry-olv gry, tr dissem pyr, tr calc, tr micfoss, sft-frm, sbbiky-sbfiss tr blky.

Survey @ 2214.3m: 27.97° 129.8Az

SANDSTONE: clr-lt yel, crs-f, tr v crs, pr srt, sbrnd-sbang, tr ang, pr inf por, no fluor.

ARGILLACEOUS SILTSTONE: orgn brn-yel brn, tr calc, tr glauc, sft-frm, sbbiky-blky.

SILTY CLAYSTONE: orgn brn-yel brn, tr calc, tr glauc, tr carb spks, sft-v sft, occ disp, sbbiky-blky, occ amor.

ARGILLACEOUS SILTSTONE: grn/brn-gry/brn, com glauc, v sft-frm, occ disp, blky-sbbiky, occ amor.

Survey @ 2242.7m: 27.61° 129.6Az

SANDSTONE: clr-trnsl, med-vf, pr srt, sbang-sbrnd, com glauc, lse, pr inf por, no fluor.

ARGILLACEOUS SILTSTONE: grn/brn-gry/brn, com glauc, sft-disp, blky-amor.

ARGILLACEOUS SILTSTONE: grn/brn-gry/brn, com glauc, tr-rr dissem pyr, sft-disp, blky-amor.

Survey @ 2271.4m: 28.48° 130.6Az

SILTY CLAYSTONE: grn/brn-gry/brn, com glauc, tr-rr dissem pyr, sft-disp, blky-amor.

SILTY CLAYSTONE: grn/brn-gry/brn, com glauc, tr-rr dissem pyr, tr micmic, sft-disp, blky-amor.

ARGILLACEOUS SILTSTONE: grn/brn-gry/brn, com glauc, tr-rr dissem pyr, tr micmic, sft-disp, blky-amor.

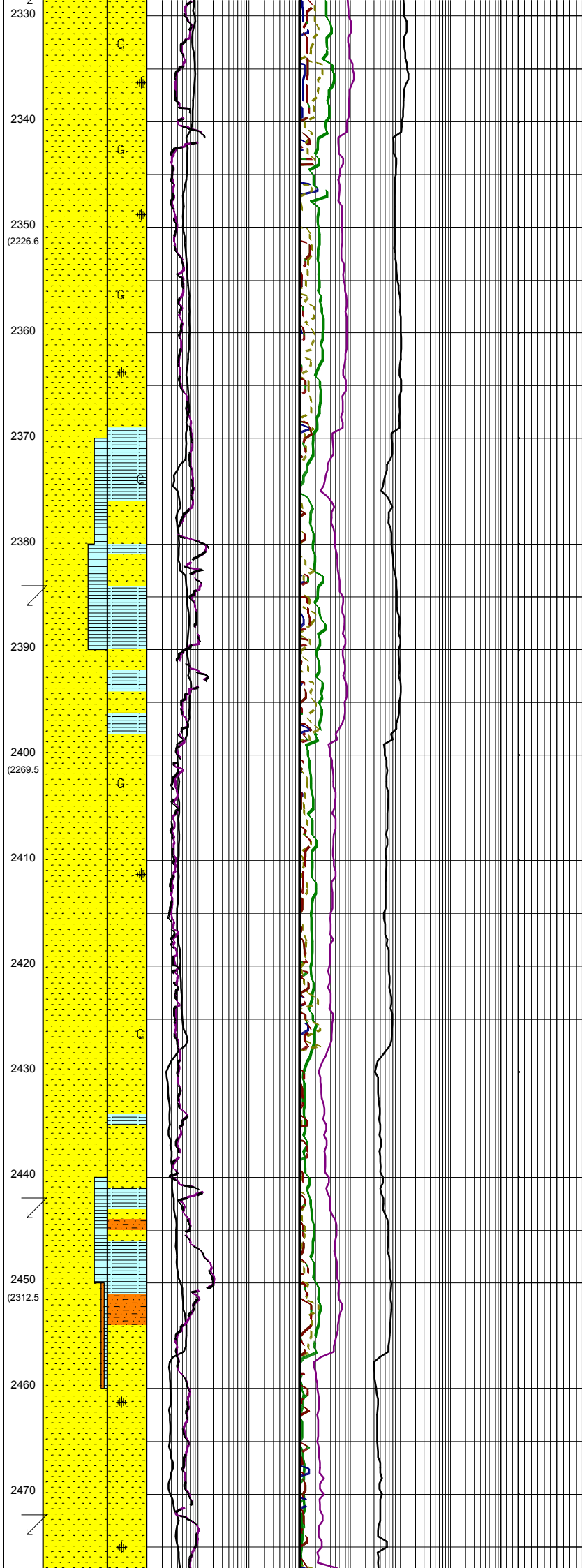
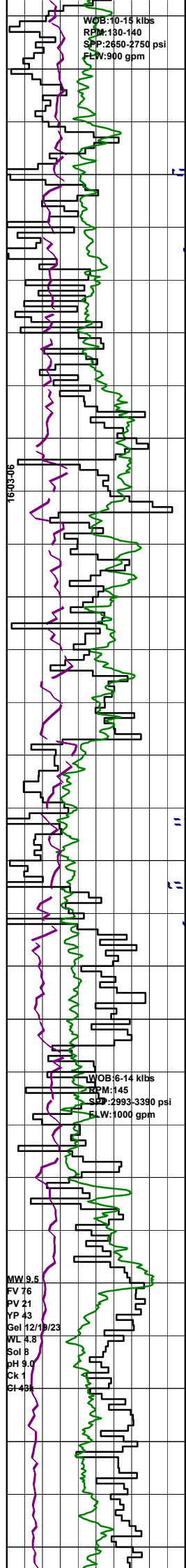
Survey @ 2300.1m: 28.83° 130.5Az

SANDSTONE: clr-trnsl, vf-med, tr crs pr srt, ang-sbang, tr glauc, tr dissem pyr, tr micmic, lse, gd inf por, no fluor.

SANDSTONE: clr-trnsl, med-vf, tr crs pr srt, ang-sbang, occ brn/gry sity mtx, tr glauc, tr dissem pyr, tr micmic, lse, gd inf por, no fluor.

SANDSTONE: clr-trnsl, med-vf, tr crs pr srt, ang-sbrnd, occ brn/gry sity mtx, tr glauc, tr dissem pyr, lse, gd inf por, no fluor.

Survey @ 2328.7m: 30.10° 130.3Az



SANDSTONE: clr-trnsl, f-med, tr crs, tr vf, mod srt, ang-sbrnd, occ brn/gry slty mtx, tr glauc, tr dissem pyr, lse, gd inf por, no fluor.

Survey @ 2357.5m: 31.19° 129.7Az

SANDSTONE: clr-trnsl, f-med, occ crs, mod srt, sbang-sbrnd, sph-sbsph, sil & pyr cmt, pred cl mtx, occ calc mtx, tr kao mtx, tr-com glauc, lse, gd inf por, no fluor

CLAYSTONE: med gry, occ brn/gry, com glauc, v sft, amor, partly w/out.

Survey @ 2386.4m: 30.97° 129.6Az

SANDSTONE: clr-trnsl, tr med dk gry-dk gry, pred crs-v crs, occ f-med, mod wl srt, sbang-sbrnd, sph-sbsph, tr sil & pyr cmt, tr kao mtx, tr glauc, lse, gd inf por, no fluor.

SANDSTONE: clr-trnsl, f-med, occ crs, mod srt, sbang-sbrnd, sph-sbsph, tr sil & pyr cmt, tr kao mtx, tr glauc, lse, gd inf por, no fluor.

Survey @ 2444.3m: 30.32° 129.7Az

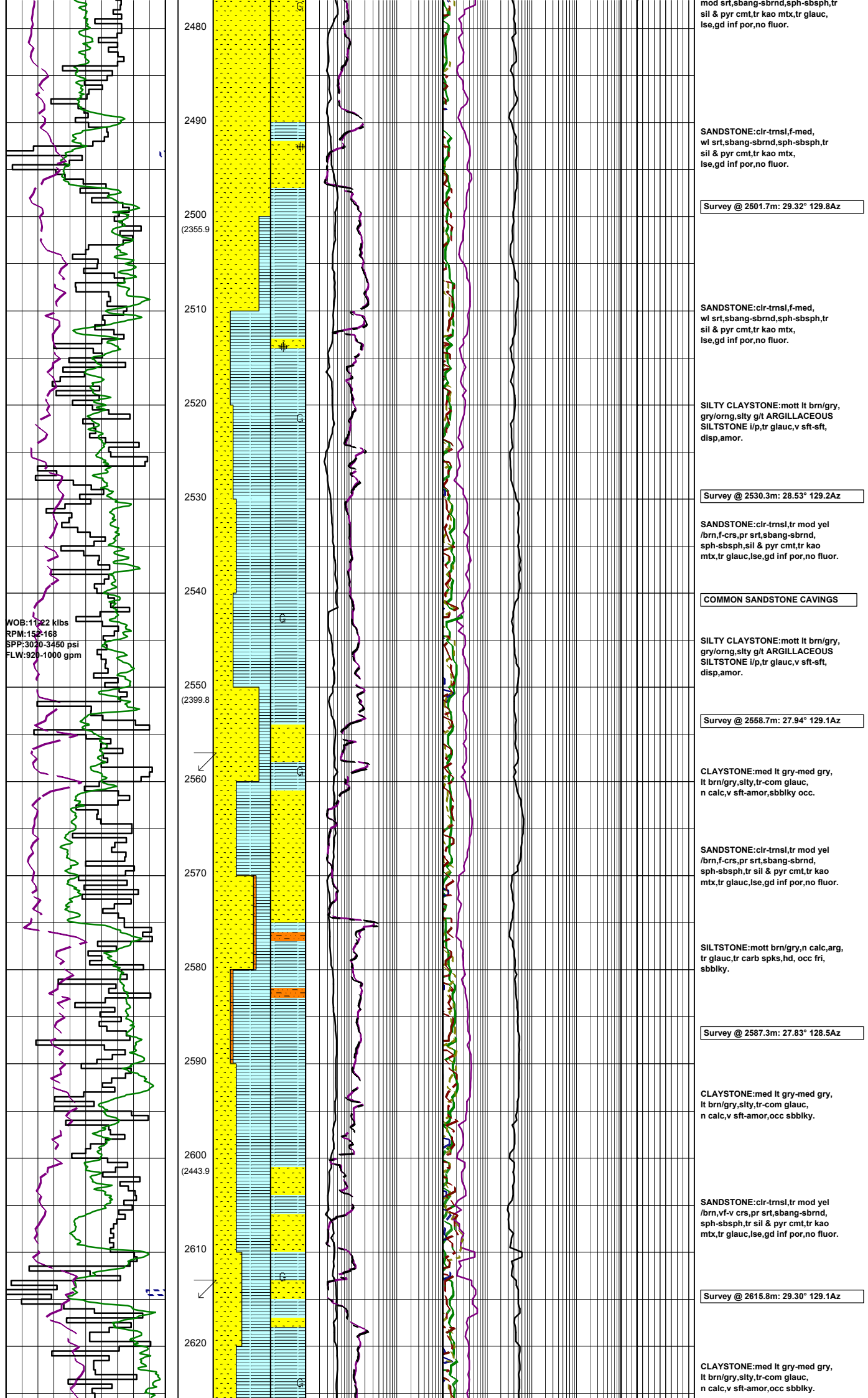
SILTSTONE: brn/gry, tr carb spks, pred fri, occ frm-hd, blk-y-sbbiky.

CLAYSTONE: med dk gry, tr pyr, frm-hd, sbbiky, occ sbfiss.

SANDSTONE: clr-trnsl, vf-crs, pr srt, sbang-sbrnd, sph-sbsph, tr sil & pyr cmt, tr kao mtx, tr chl, lse, gd inf por, no fluor.

Survey @ 2473.0m: 29.94° 129.8Az

SANDSTONE: clr-trnsl, vf-f,



mod srt,sbang-sbrnd,sph-sbsp, tr sil & pyr cmt, tr kao mtx, tr glauc, lse, gd inf por, no fluor.

SANDSTONE: clr-tmsl, f-med, wl srt, sbang-sbrnd, sph-sbsp, tr sil & pyr cmt, tr kao mtx, lse, gd inf por, no fluor.

Survey @ 2501.7m: 29.32° 129.8Az

SANDSTONE: clr-tmsl, f-med, wl srt, sbang-sbrnd, sph-sbsp, tr sil & pyr cmt, tr kao mtx, lse, gd inf por, no fluor.

SILTY CLAYSTONE: mott lt brn/gry, gry/org, slty g/t ARGILLACEOUS SILTSTONE i/p, tr glauc, v sft-sft, disp, amor.

Survey @ 2530.3m: 28.53° 129.2Az

SANDSTONE: clr-tmsl, tr mod yel /brn, f-crs, pr srt, sbang-sbrnd, sph-sbsp, sil & pyr cmt, tr kao mtx, tr glauc, lse, gd inf por, no fluor.

COMMON SANDSTONE CAVINGS

SILTY CLAYSTONE: mott lt brn/gry, gry/org, slty g/t ARGILLACEOUS SILTSTONE i/p, tr glauc, v sft-sft, disp, amor.

Survey @ 2558.7m: 27.94° 129.1Az

CLAYSTONE: med lt gry-med gry, lt brn/gry, slty, tr-com glauc, n calc, v sft-amor, sbbkly occ.

SANDSTONE: clr-tmsl, tr mod yel /brn, f-crs, pr srt, sbang-sbrnd, sph-sbsp, tr sil & pyr cmt, tr kao mtx, tr glauc, lse, gd inf por, no fluor.

SILTSTONE: mott brn/gry, n calc, arg, tr glauc, tr carb spks, hd, occ fri, sbbkly.

Survey @ 2587.3m: 27.83° 128.5Az

CLAYSTONE: med lt gry-med gry, lt brn/gry, slty, tr-com glauc, n calc, v sft-amor, occ sbbkly.

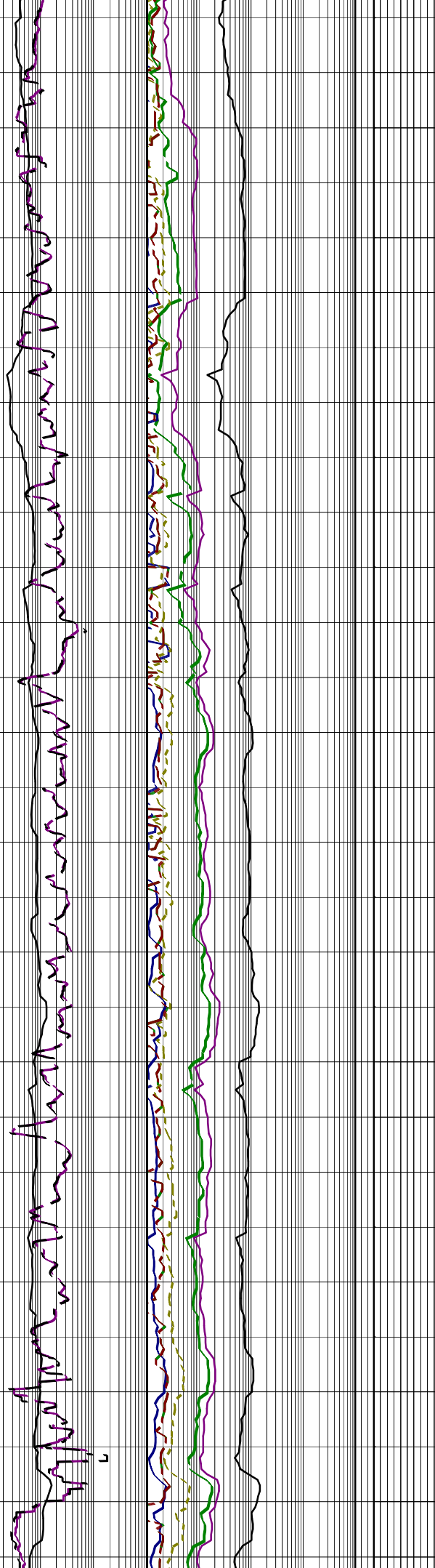
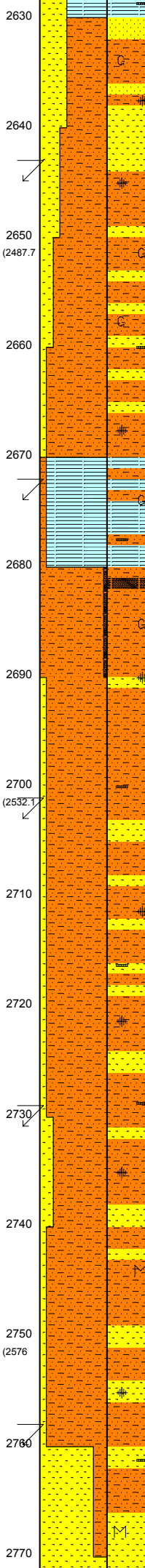
SANDSTONE: clr-tmsl, tr mod yel /brn, vf-v crs, pr srt, sbang-sbrnd, sph-sbsp, tr sil & pyr cmt, tr kao mtx, tr glauc, lse, gd inf por, no fluor.

Survey @ 2615.8m: 29.30° 129.1Az

CLAYSTONE: med lt gry-med gry, lt brn/gry, slty, tr-com glauc, n calc, v sft-amor, occ sbbkly.

WOB:20-24 kilbs
RPM:155
SPP:3100-3300 psi
FLW:960 gpm

WOB:20-28 kilbs
RPM:150
SPP:3040-3260 psi
FLW:918 gpm



SANDSTONE:clr-trmsl,f-crs,pr srt, sbang-sbrnd,tr-rr pyr nod,com glauc, tr carb mat,lse,pr inf por,no fluor.

Survey @ 2644.5m: 28.38° 129.1Az

ARGILLACEOUS SILTSTONE:med lt gry-med gry,com glauc, tr pyr nod & dissem,tr carb mat, disp frm,amor-sbbiky.

SANDSTONE:clr-trmsl, vf-crs,tr v crs,v pr srt,sbrnd-sbang, tr carb mat,tr glauc,tr pyr nod & dissem,lse,gd inf por,no fluor.

ARGILLACEOUS SILTSTONE:med lt gry-med gry,com glauc, tr pyr nod & dissem,tr carb mat, disp frm,amor-sbbiky.

Survey @ 2673.5m: 27.29° 128.4Az

SILTY CLAYSTONE:lt olv gry- lt gry,tr off wh,calc,kaol i/p, tr glauc,tr pyr nod & dissem,tr carb mat,disp-sft,amor-sbfiss.

ARGILLACEOUS SILTSTONE: lt olv gry-lt gry,tr-rr dk gry,tr off wh,mnr calc,kaol i/p,tr pyr dissem, tr glauc,sft-frm,tr disp,sbbiky-sbfiss, tr amor.

COAL:olv blk-gry/brn,dll-ea, slty,mod hd-frm,com brit,sbfiss-sbbiky,ang-unevn.

SANDSTONE:clr-trmsl,f-crs,tr v crs,pr srt,sbrnd-sbang,lse,gd inf por,no fluor.

Survey @ 2702.5m: 27.35° 128.8Az

ARGILLACEOUS SILTSTONE: lt olv gry-lt gry,tr-rr dk gry,tr off wh,mnr calc,kaol i/p,tr pyr nod,tr carb mat,sft-frm,tr disp,sbbiky-sbfiss,tr amor.

SANDSTONE:clr-trmsl,f-crs,tr v crs,pr srt,sbang-ang,lse,fr inf por,no fluor.

ARGILLACEOUS SILTSTONE: lt olv gry-lt gry,tr off wh, kaol i/p,tr pyr nod,tr carb mat, sft-frm,tr disp,sbbiky-blky, tr amor.

Survey @ 2731.3m: 28.69° 129.1Az

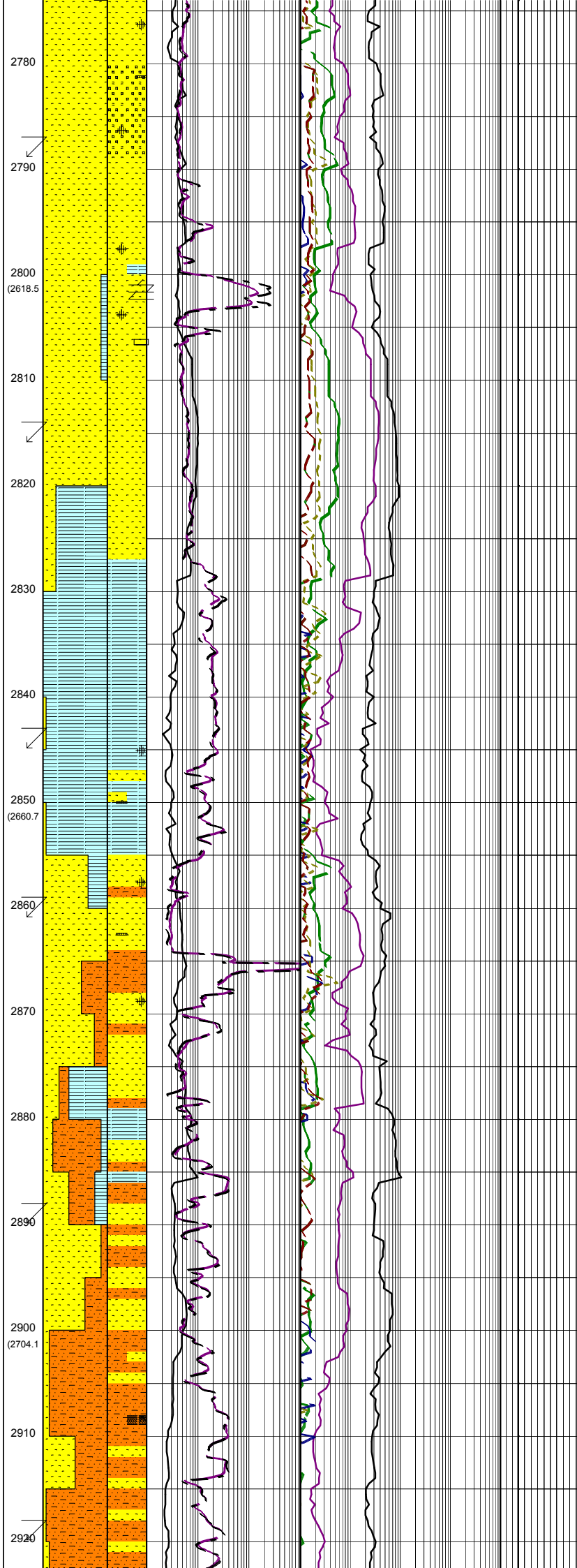
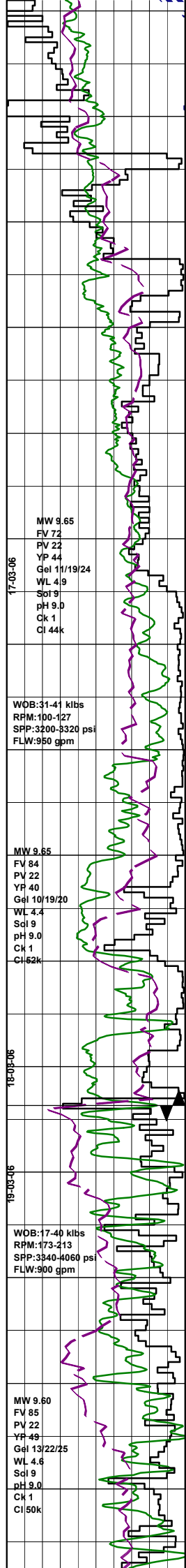
SANDSTONE:clr-trmsl,f-med,tr crs,pr srt,sbrnd-sbang,lse,gd inf por,no fluor.

ARGILLACEOUS SILTSTONE: lt olv gry-lt gry,tr off wh, kaol i/p,tr pyr nod,tr carb mat, tr mic,sft-frm,tr disp,blky-sbbiky, tr amor.

SANDSTONE:clr-trmsl,f-med,tr crs,tr vf,pr srt,sbrnd-sbang,lse, gd inf por,no fluor.

Survey @ 2759.7m: 30.71° 130.0Az

SANDSTONE:clr-trmsl,tr opq, vf-crs,tr v crs,v pr srt,sbang-sbrnd, tr calc,tr pyr nod, tr mic, tr carb mat,lse,gd inf por, no fluor.



SANDSTONE:clr-trmsl,tr opq,
vf-crs,com v crs,v pr srt,sbang-
sbrnd,tr pyr nod & cmt aggs i/p,
lse,tr frm aggs,gd inf por,no fluor.

Survey @ 2788.2m: 33.03° 129.3Az

SANDSTONE:clr-trmsl,tr opq,
crs-f,com v crs,v pr srt,rnd-sbang,
tr ang,tr qtz ovghs,tr pyr nod & cmt
aggs,lse,tr frm-mod hd,gd inf por,
no fluor.

SANDSTONE:clr-trmsl,tr opq,
f-crs,tr v crs,v pr srt,rnd-sbang,
tr ang,tr qtz ovghs,tr pyr nod & cmt
aggs,tr dolo cmt,lse,tr frm-mod hd,
gd inf por,no fluor.

Survey @ 2816.4m: 33.18° 128.2Az

CLAYSTONE 1:mott v lt-lt gry,med dk
gry,tr silt,tr calc,rr micfoss,tr carb
carb mat,amor-sbbkly,v sft-sft,
occ frm.

CLAYSTONE 2:dk gry,sl calc,frm,
bkly-spintry,homogen
Cavings:50mmx10mm in coarse sieve
sample.

Survey @ 2845.3m: 31.25° 128.1Az

CLAYSTONE:dk gry-lt gry,com off
wh,occ aren i/p,tr calc i/p,tr pyr
nod,tr carb mat,frm-sft,tr disp,
bkly-sbfiss,tr amor.

SANDSTONE:clr-trmsl,tr opq
f-crs,tr v crs,v pr srt,ang-rnd,
tr pyr nod,tr carb mat,tr sil lams,
tr qtz ovghs,lse,gd inf por,
no fluor.

ARGILLACEOUS SILTSTONE:
lt gry-dk gry,tr off wh,tr pyr nod,
tr carb mat,frm-sft,tr disp,bkly-
sbbkly,tr amor.

SANDSTONE:clr-trmsl,tr opq,
f-med,pr srt,sbang-sbrnd,tr rock
flour,tr pyr nod,tr carb mat,lse,fr
inf por,no fluor.

Rmf 2878m:0.08 ohm @ 75°F

Bit#: SMITH BVCP5
SIZE:311mm (12.25")
JETS:3x24, 1x16
IN: 2878m OUT:3191
RUN:313m HRS:25.8
COND:3-5-BT-G-E-1-WT-PR

Survey @ 2890.1m: 29.25° 127.8Az

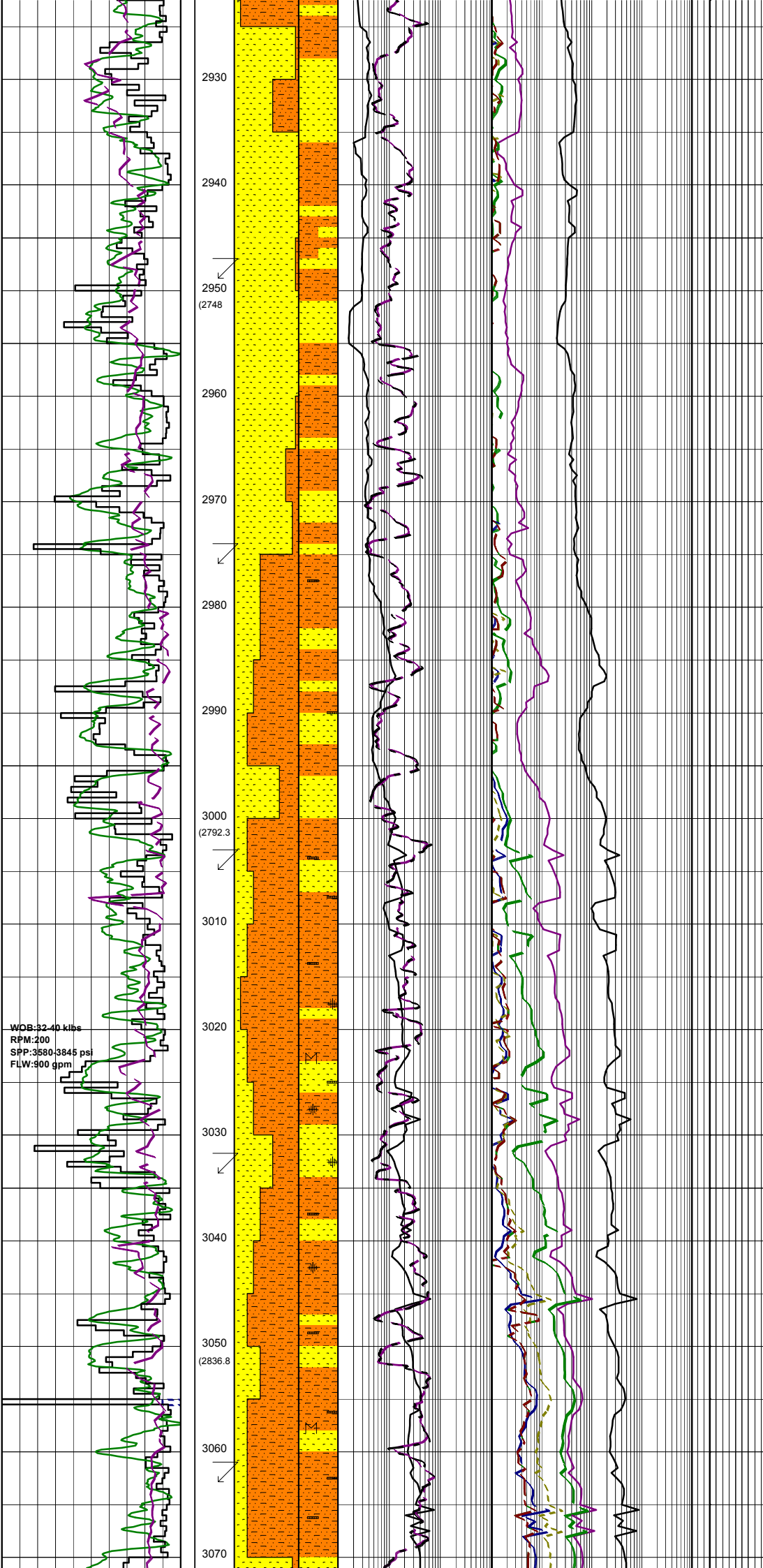
SILTSTONE:lt gry-lt brn/gry,
calc,tr arg,occ aren,tr peld
glauc,tr carb mat,v sft-sft,
sbbkly-amor.

SANDSTONE:clr-trmsl,med-crs,
occ v crs,pr srt,sbang-
sbrnd,sph-sbph,tr pyr cmt,lse,
gd inf por,no fluor.

COAL:blk,dll,silty,pyr,frm-brit,
bkly-hckly.

Survey @ 2919.4m: 28.69° 128.8Az

SILTSTONE:lt gry-lt brn/gry,



WOB:32.40 klbs
 RPM:200
 SPP:3580 3845 psi
 FLW:900 gpm

calc, tr arg, occ aren, tr peld
 glauc, tr carb mat, v sft-sft,
 sbbkly-amor.

SANDSTONE:clr-trnsl, tr opq, f-v
 crs, pr srt, sbang-sbrnd, sph-sbsp,
 tr pyr & sil cmt, lse, gd inf por,
 no fluor.

Survey @ 2948.1m: 28.12° 127.5Az

ARGILLACEOUS SILTSTONE:
 lt med gry-olv gry, brn/gry,
 arg, calc, tr carb mat, tr
 glauc, v sft-sft, amor-sbbkly.

SANDSTONE:cl-trnsl, f-v crs, v pr
 srt, sbang-sbrnd, sph-sbsp, sil &
 pyr cmt, pred kao mt, tr carb mat,
 v lse, v gd inf por, no fluor.

ARGILLACEOUS SILTSTONE:
 lt med gry-olv gry, brn/gry,
 arg, calc, tr carb mat, tr
 glauc, v sft-sft, amor-sbbkly.

Survey @ 2976.4m: 27.68° 128.1Az

SANDSTONE:clr-trnsl, tr opq,
 vf-med, mod srt, ang-sbang, tr carb
 mat, lse, fr-pr inf por, no fluor.

SILTSTONE:dk grn/gru-lt gry,
 tr off wh, aren i/p, tr-r carb spks,
 sft-v sft, com disp, sbbkly-amor.

SANDSTONE:clr-trnsl, tr opq,
 vf-med, mod srt, ang-sbang, tr carb
 mat, lse, fr-pr inf por, no fluor.

SILTSTONE:dk grn/gru-lt gry,
 tr off wh, aren i/p, tr carb spks,
 sft-disp, sbbkly-amor.

Survey @ 3005.1m: 27.37° 127.7Az

SANDSTONE:clr-trnsl,
 vf-med, mod srt, sbang-sbrnd, tr ang,
 tr carb spks, lse, tr sft aggs,
 fr-pr inf por, no fluor.

SILTSTONE:grn/gru-lt gry, tr
 dk grn/gry, aren i/p, tr carb spks
 sft-disp, sbbkly-amor.

SANDSTONE:clr-trnsl, tr opq,
 f-med, tr crs mod srt, sbang-sbrnd, tr
 kaol aggs, tr carb spks, tr pyr nod,
 lse, tr sft aggs, fr inf por, no fluor.

SILTSTONE:grn/gru-lt gry, tr
 dk grn/gry, aren i/p, tr mic, tr
 carb spks, tr pyr nod, sft-disp,
 sbbkly-amor.

Survey @ 3034.2m: 26.97° 128.8Az

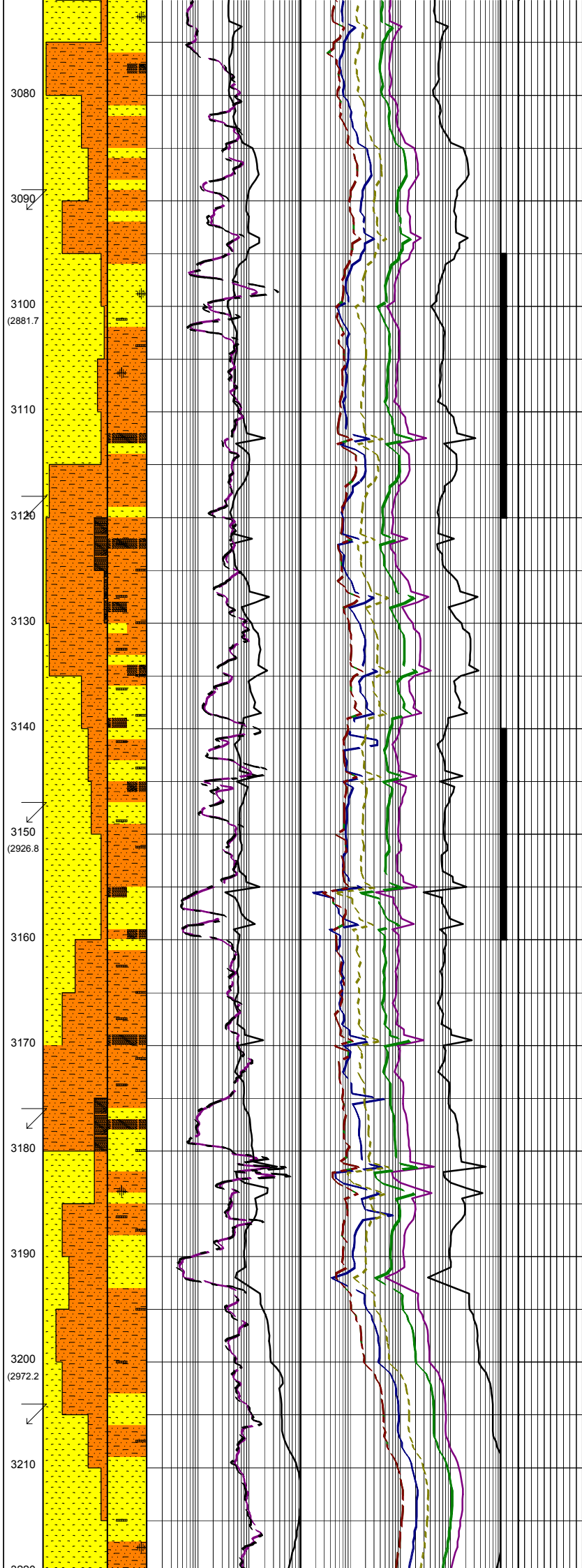
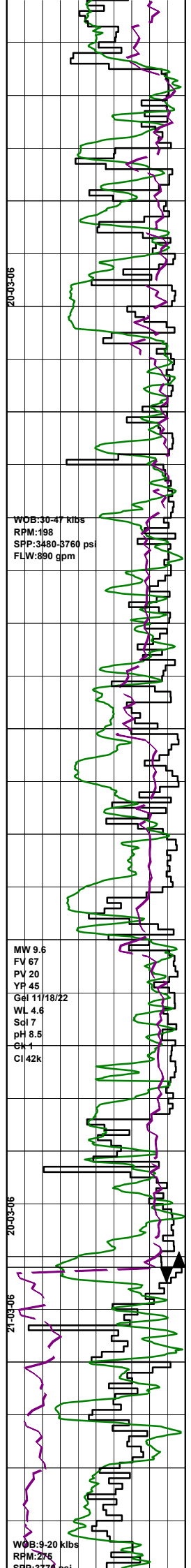
SANDSTONE:clr, tr opq,
 vf-med, tr v crs, pr srt, sbang-md,
 tr wk sil cmt aggs, tr kaol mt, tr
 pyr nod, tr carb spks, tr qtz ovghs,
 lse, tr fri, gd inf por, no fluor.

SILTSTONE:lt gry-olv gry,
 aren i/p, mn calc, tr pyr nod &
 dissem, tr carb lams & spks, sft-
 frm, com disp, sbbkly-fiss, com amor.

SANDSTONE:clr-trnsl,
 tr opq, f-med, tr v crs, mod srt,
 rnd-sbang, tr kaol mt, tr pyr nod,
 tr carb spks, lse, tr fri, fr-gd inf
 por, no fluor.

Survey @ 3062.6m: 26.42° 129.6Az

SILTSTONE:lt olv gry-grn/gry,
 tr olv blk, tr mic, tr carb mat, sft-
 disp, tr mod hd, sbbkly-amor, tr blk.



SANDSTONE:clr-tmsl,
tr off wh,f-med,tr v crs,mod srt,
ang-sbang,tr kaol mt,x,tr pyr cmt &
nod,tr carb spks,lse,tr fri,fr-gd inf
gd inf por,no fluor.

Survey @ 3091.1m: 25.88° 130.1Az

SILTSTONE:brn/gry-brn/blk,
com carb mat,arg i/p,n calc,
v sft-sft,occ frm,sbbiky-amor.

SANDSTONE:clr-tmsl,vf-v crs,
v pr srt,sbang-sbrnd,occ ang,
sph-sbsph,sil & pyr cmt,tr carb
mat,rr mic,rr rd lith frags,pred
lse-occ f gr fri agg,v gd inf por,
fluor.

FLUOR:3095m-3120m;5-15%,dll
yel/grn,no cut,no c/c,no r/r.

Survey @ 3119.9m: 25.24° 129.7Az

COAL:blk,vit,v hd & brit,sbconch-
biky.

SILTSTONE:lt brn/gry-brn/gry-
brn/blk,com crs carb mat,arg i/p,
v sft-sft,occ frm,sbbiky-amor.

SANDSTONE:clr-tmsl,f-v crs,v pr
srt,sbang-sbrnd,sil & pyr cmt,kaol
mtx,tr carb mat,rr mic,pred lse,v gd
inf por,no fluor.occ agg med lt gry-
med gry,clr,vf-f,wl srt,sbang-sbrnd,
sph,sil calc cmt,fri,fr inf por,no
fluor.

Rmf 3150m:0.07 ohm @ 75°F

Survey @ 3149.0m: 25.23° 131.9Az

SANDSTONE:clr-tmsl,f-v crs,v pr
srt,sbang-sbrnd,sil & pyr cmt,abdt
kao mt,x,tr carb mat,lse,occ sft &
fri aggs,fr inf por,fluor.

FLUOR:3140m-3160m;3-20%,dll
grn/yel,no cut,no c/c,no r/r.

SILTSTONE:brn/gry-brn/blk,tr arg,
com carb mat,v sft-sft,amor-sbbiky.

COAL:blk,vit,v hd & brit,sbconch-
biky.

Survey @ 3177.4m: 24.66° 131.9Az

SANDSTONE:clr-tmsl,tr opq,
vf-med,mnr crs,pr srt,sbang-rnd,tr
kaol mt,x,lse,tr fri,fr-gd inf por,
no fluor.

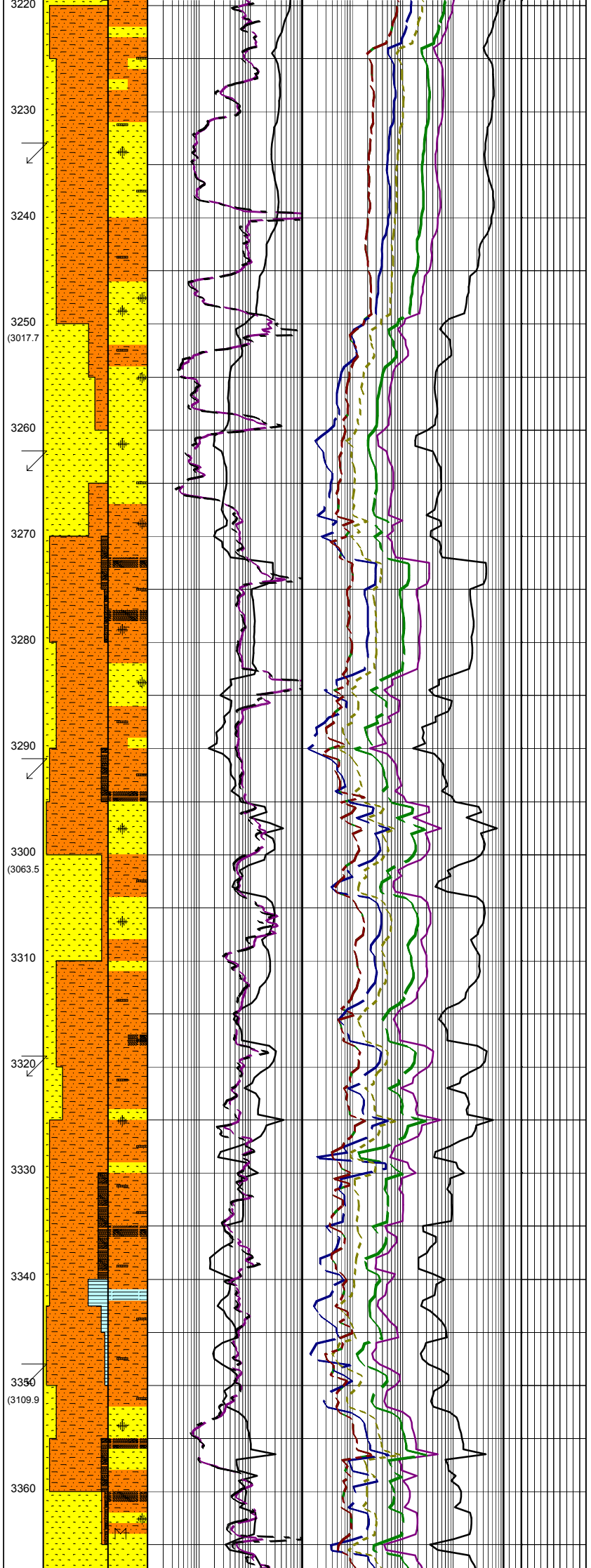
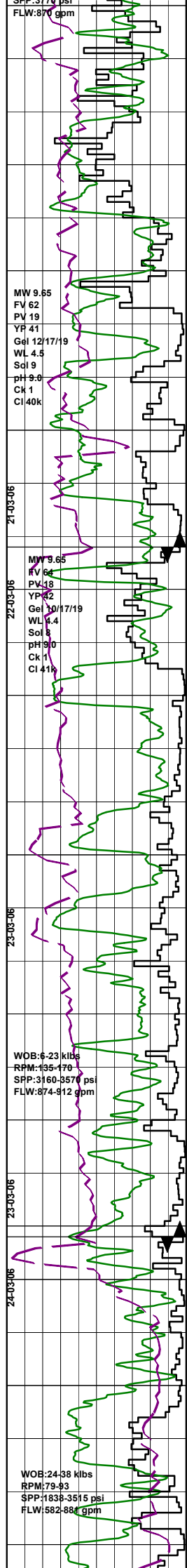
SILTSTONE:lt olv gry-dk
grn/gry,aren i/p,tr pyr nod,tr calc,
com carb mat,mod hd-sft,com disp,
biky-sbbiky,com amor.

Bit#6: REED RSX 162
SIZE: 311mm (12.25")
JETS: 3x20,3x18
IN: 3191m OUT:3271m
RUN:80m HRS:7.19
COND:1-7-WT-N-X-I-BT-PR

Survey @ 3206.2m: 24.51° 132.8Az

SANDSTONE:trnsi-clr,tr off wh,
med-f,com crs-v crs,v pr srt,ang-
sbrnd,tr kaol mt,x,tr-r carb spks,
mnr pyr nod,lse,gd inf por,no fluor.

SILTSTONE:dk grn/gry-grn/gry,
tr-r carb spk,mnr pyr nod,sft-frm,
tr mod hd,biky-fiss.



SANDSTONE:trnsi-clr,vf-f,
 tr crs,mod srt,ang-sbrnd,tr mod sil
 cmt aggs,tr carb spks,mnr pyr nod,lse,
 tr md hd,fr inf por,no fluor.

SILTSTONE:dk grn/gry-lt gry,
 tr carb spks,mnr pyr nod,sft-frn,
 tr mod hd,blky-fiss.

Survey @ 3234.5m: 24.56° 132.5Az

SANDSTONE:trnsi-clr,vf-med,
 tr crs,mod srt,ang-sbrnd,tr carb spks,
 mnr pyr nod,lse,fr inf por,no fluor.

SILTSTONE:grn/gry-lt gry,tr grn/
 grn/blk,tr carb spks,tr pyr nod,
 disp-frn,tr mod hd,amor-blky,tr
 fiss.

SANDSTONE:trnsi-clr,f-med,
 com crs,tr vf,tr v crs,v pr srt,
 ang-sbang,tr sbrnd,com mod hd pyr
 cmt,tr wk sil cmt,com pyr nod,tr
 carb spks,lse-fri,gd inf por,
 no fluor.

SANDSTONE:trnsi-clr,f-med,tr
 crs,mod srt,sbang-sbrnd,mnr mod
 hd sil cmt,tr-rr mod hd pyr cmt,
 tr carb spks,tr pyr nod,lse,tr mod hd
 aggs,gd-fr inf por,no fluor.

Survey @ 3263.9m: 24.06° 132.8Az

Bit#7: REED RSX 616
SIZE: 311mm (12.25")
JETS: 6x20
IN: 3271m **OUT:** 3336m
RUN: 65m **HRS:** 14.25
COND: 1-5-WT-S-X-IN-CT-PR

COAL:brn/blk,vit,frm-mod hd,
 blky-sbfiss,conch.

SILTSTONE:lt gry-grn/gry,tr calc,
 tr pyr nod,abdt carb mat,sft-mod hd,
 com disp,blky-sbfiss,com amor.

SANDSTONE:trnsi-clr,tr opq,
 med-f,tr crs,mod srt,ang-sbrnd,tr
 mod hd calc cmt aggs,tr mod hd pyr
 cmt aggs,tr-rr carb spks,tr pyr nod,
 lse,fr inf por,no fluor.

Survey @ 3292.7m: 22.92° 132.7Az

SILTSTONE:med gry-med dk gry,
 brn/gry-brn/blk,arg,tr-com carb
 mat,sft-frn,sbbiky-sbply,com
 amor,occ sbfiss.

SANDSTONE:cl-trnsi,med lt gry-med
 gry aggs,vf-med,mod wl srt,sbang-
 sbrnd,sph-sbsph,tr sil & pyr cmt,
 arg & kao mtz,tr chlor,hd-fri agg,
 pred lse,fr-gd inf por,nil-tr fluor.

Survey @ 3321.8m: 21.93° 133.4Az

Bit#8: HUGHES MXL18DX
SIZE: 311mm (12.25")
JETS: 2x28,1x24
IN: 3336m **OUT:** 3555m
RUN: 219m **HRS:** 47.1
COND: 7-8-WT-A-F-1/4"-LT-PR

SANDSTONE:cl-trnsi,tr med lt gry-
 med gry agg,f-crs,pr srt,sbang-
 sbrnd,sph-sbsph,sil & pyr cmt,kao
 mtz,lse,tr hd agg,gd inf por,no
 fluor.

SILTSTONE:brn/gry-brn/blk,arg,
 carb,sft,rr hd sil & carb,pred
 amor-sbbiky.

CLAYSTONE:med gry-grn/gry,silty,
 sl calc,tr carb mat,frm,sbbiky-
 spity.

Survey @ 3349.7m: 21.08° 134.9Az

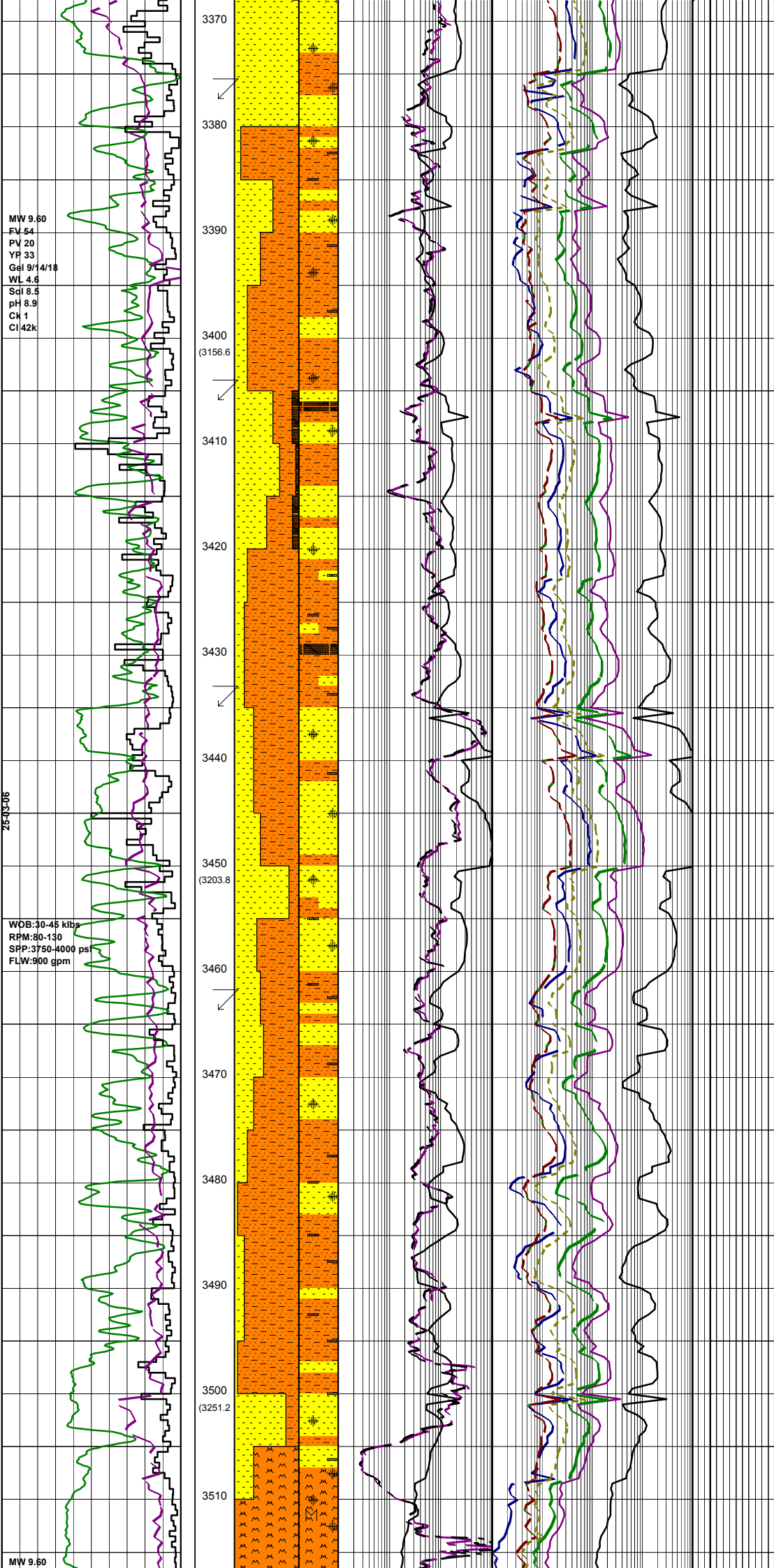
SANDSTONE:trnsi-clr,tr opq,
 med-f,com crs,pr srt,sbang-sbrnd,
 tr arg mtz aggs,tr sil & pyr cmt aggs,
 tr pyr nod,tr mic,com carb mat,lse,
 gd inf por,no fluor.

MW 9.60
FV 54
PV 20
YF 33
Gel 9/14/18
WL 4.6
Scl 8.5
pH 8.9
Ck 1
Cl42k

25-43-06

WDB:30-45 klbs
RPM:80-130
SPP:3750-4000 ps
FLW:900 gpm

MW 9.60



SANDSTONE:trnsi-clr,tr opq,
med-f,tr v crs,pr srt,sbang-sbrnd,
tr arg mtx aggs,tr sil & pyr cmt aggs,
tr pyr nod,tr mic,tr qtz ovghs,com
carb mat,lse,gd inf por,no fluor.

Survey @ 3377.5m: 20.63° 134.2Az

SILTSTONE:grn/gry-olv gry,
tr calc,arg ip,com carb mat,
tr carb lams,tr pyr nod & dissem,
sft-mod hd,tr disp,biky-sbfiss,
tr amor.

SANDSTONE:trnsi-clr,vf-med,
com v crs,tr gran,v pr srt,sbrnd-
sbang,tr mod hd calc cmt aggs,com
mod hd pyr cmt aggs,tr pyr nod,com
carb mat,tr qtz ovghs,lse,gd inf &
vis por,tr dll,wh-pl yel,residue cut.

SILTSTONE:dk grn/gry-grn/gry,
tr calc,tr pyr nod,com carb mat,
frm-sft,tr disp,biky-fiss,tr amor.

Survey @ 3406.4m: 20.10° 133.3Az

COAL:brn/blk,vit,frm-mod hd,
biky-sbfiss,conch.

SANDSTONE:trnsi-clr,med-vf,
com v crs,tr gran,v pr srt,ang-
sbrnd,tr mod hd sil cmt aggs,tr
mod hd pyr cmt aggs,tr pyr nod,tr
kaol mtx aggs,tr qtz ovghs,lse,gd
inf por,no fluor.

SILTSTONE:dk grn/gry-grn/gry,
tr calc,tr pyr nod,com carb mat,
mod hd-sft,tr disp,fiss-biky,tr amor.

Survey @ 3435.1m: 19.06° 134.8Az

SANDSTONE:clr-trnsi,med lt gry
aggs,f-crs,occ v crs,pr srt,
sbang-sbrnd,sph-sbsph,sil & pyr
cmt,kaol mtx,tr carb mat,lse-fri,
gd inf por,no fluor.

SILTSTONE:brn/gry-brn/blk, arg,
v carb,sft-frm,occ mod hd,sbbiky-
sbply.

SANDSTONE:clr-trnsi,lt brn,wh,
f-crs,occ v crs,wk sil cmt,
tr-15% arg mtx,tr lith gr,tr
carb mat,fr-gd vis & inf por,
no fluor

Survey @ 3463.1m: 18.61° 135.3Az

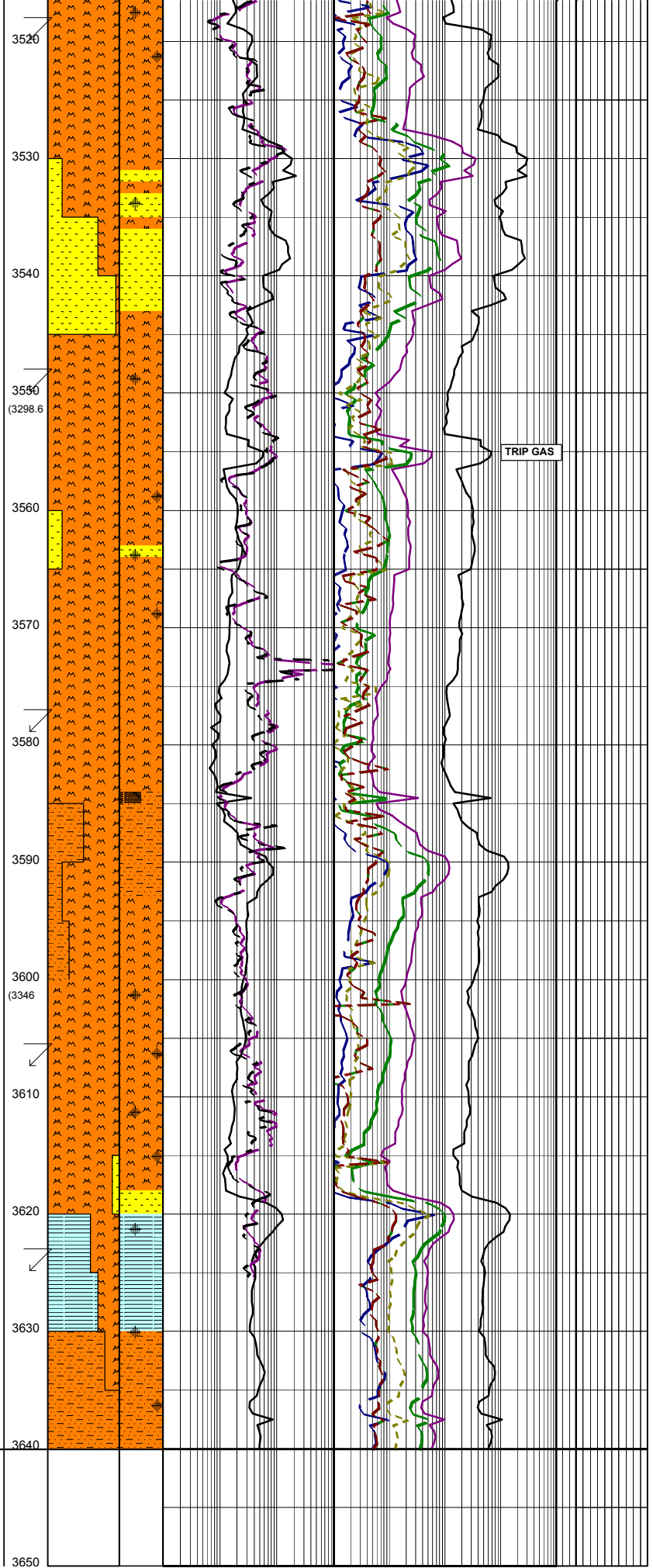
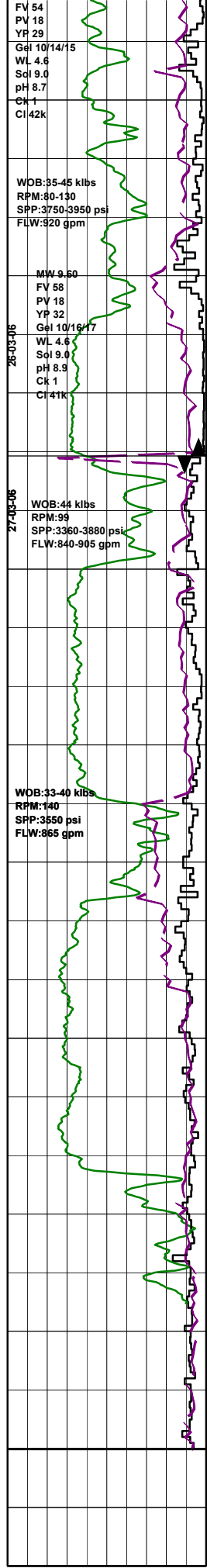
3473m-3480m: Gas data edited
from Auxilliary Gas Trap due
to main gas system maintenance.

SANDSTONE:clr-trnsi,med gry aggs,
f-med,occ crs,sbang-sbrnd,tr carb
mat,r chlor,sil & pyr cmt,kaol mtx,
lse-fri,gd inf por,no fluor.

SILTSTONE:brn/gry,sl arg,com
carb mat,v sft-frm,amor-sbbiky.

SANDSTONE:trnsi-clr,vf-med,
tr crs,mod srt,ang-sbrnd,tr wk sil
cmt aggs,tr kaol mtx aggs,tr pyr nod,
tr carb mat,lse,gd inf por,no fluor.

VOLCANICS:med gry-v lt gry,pnk,
brn grn gry,sft-frm,occ hd,com
weathrd to clay,occ relic xin tex,
relic flw bndg,fresh smpl show crs
xin structure w/ abdt pyrox,sil
shards,pyr,calcite,tr chlor.



Survey @ 3520.9m: 18.40° 134.4Az

VOLCANICS:v lt gry-med blu/gry, com off wh, tr brn/blk, g/t claystone, tr calc, com pyr nod & disse, frm-mod hd, com sft & hd, tr disp, blk-amor, tr fiss, xin relic tex.

SANDSTONE:trns-l-clr, tr opq, f-crs, tr gran, pr srt, tr mod hd calc cmt aggs, tr mod hd pyr cmt aggs, com kaol mtx aggs, lse, tr fri, fr inf por, no fluor.

Survey @ 3549.9m: 18.23° 136.2Az

Bit#9:Smith FG150DCPS
 SIZE: 311mm (12.25")
 JETS: 3x24, 1x13
 IN: 3555m OUT:3640m
 RUN:85m HRS:13.2
 COND:

VOLCANICS:v lt gry-med blu/gry, com off wh, tr brn/blk, g/t claystone, tr calc, com pyr, frm-mod hd, com sft & hd, tr disp, blk-amor, tr fiss, xin relic tex. Fresh samples show med-crs xl strct, w pyroxene, calcite, pyr & qtz w/ mnr feld.

Survey @ 3578.0m: 18.83° 134.7Az

SILTSTONE:brn/blk-blk, v carb w/ COAL lams, sft, sbbkly-sbplty, sbfiss i/p.

SILTSTONE:lt brn/gry-brn/gry, arg, com carb spk, sft, fri, amor-sbbkly.

VOLCANICS:lt gry-dk grn/gry, tr grn/blk, tr lt brn, g/t arg, tr aren, tr calc, com pyr nod, tr pyr, sft-mod hd, tr disp, blk-amor, tr fiss, xin relic tex.

Survey @ 3607.7m: 19.21° 134.9Az

VOLCANICS:lt gry-dk grn/gry, tr grn/blk, tr lt brn, g/t arg, tr aren, tr calc, tr-r pyr nod, tr pyr, sft-mod hd, tr disp, blk-amor, xin relic tex.

CLAYSTONE:lt brn-mod yel brn, tr slty, tr carb mat, tr pyr nod, sft-disp, amor.

Survey @ 3625.9m: 18.88° 134.5Az

SILTSTONE:lt gry-dk grn/gry, tr grn/blk, tr lt brn, tr calc, tr pyr nod, tr carb mat, sft-fri, tr disp, blk-amor, tr fiss.

TD: @ 3640m TVD: @ 3383.7m